

- 1 Tim has two packs of pop.
Each pack holds 24 cans.



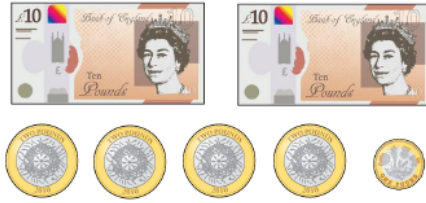
Sally has five smaller packs.
Each of her packs holds 6 cans.



$$\begin{aligned} 24 \times 2 &= 48 \\ 5 \times 6 &= 30 \\ 48 - 30 &= 18 \end{aligned}$$

How many more cans of pop does Tim have? **Tim has 18 more cans of pop.**

- 2 Here is some money.



The money is shared between 5 girls and 2 boys.

Each girl receives £3

How much money does each boy receive? $5 \times 3 = 15$
 $29 - 15 = 14$
 $14 \div 2 = 7$

Each boy receives £7



- 1 A can holds 330 ml of pop.
Pop is sold in packs of 6



Karl buys 12 packs of pop.
How many litres of pop does he have?

$$\begin{aligned} 6 \times 330 &= 1,980 \\ 1,980 \times 12 &= 23,760 \\ 23,760 \div 1,000 &= 23.76 \end{aligned}$$

Karl has 23.76 litres of pop.

- 2 £290 is shared between 10 boys and 12 girls.

$$\begin{aligned} 12 \times 15 &= 180 \\ 290 - 180 &= 110 \end{aligned}$$

Each girl receives £15

How much money does each boy receive, if they each get the same amount of money?

$$110 \div 10 = 11 \quad \text{Each boy gets £11}$$

- 3 Here is a sequence

2, 5, 9, 12, 2, 5, 9, 12, 2, 5, 9, 12, ...

What is the sum of the first 200 numbers in this sequence?

Explain your method.

$$\begin{aligned} 2 + 5 + 9 + 12 &= 28 \\ 28 \times 50 &= 1,400 \end{aligned}$$

